

Sympathetic activity–associated periodic repolarization dynamics predict mortality following myocardial infarction

Konstantinos D. Rizas, ... , Georg Schmidt, Axel Bauer

J Clin Invest. 2014;124(6):2808-2808. <https://doi.org/10.1172/JCI76791>.

Corrigendum

Original citation: *J. Clin. Invest.* 2014;124(4):1770–1780. doi:10.1172/JCI70085. Citation for this corrigendum: *J. Clin. Invest.* 2014;124(6):2808. doi:10.1172/JCI76791. During the preparation of this manuscript, Figure 5C was labeled incorrectly. The correct figure panel is shown at right. The authors regret the error.

Find the latest version:

<https://jci.me/76791/pdf>





Corrigendum

Sympathetic activity-associated periodic repolarization dynamics predict mortality following myocardial infarction

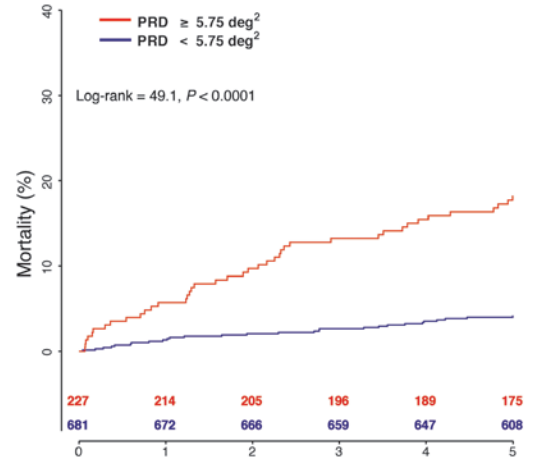
Konstantinos D. Rizas, Tuomo Nieminen, Petra Barthel, Christine S. Zürn, Mika Kähönen, Jari Viik, Terho Lehtimäki, Kjell Nikus, Christian Eick, Tim O. Greiner, Hans P. Wendel, Peter Seizer, Jürgen Schreieck, Meinrad Gawaz, Georg Schmidt, and Axel Bauer

Original citation: *J Clin Invest.* 2014;124(4):1770–1780. doi:10.1172/JCI70085.

Citation for this corrigendum: *J Clin Invest.* 2014;124(6):2808. doi:10.1172/JCI76791.

During the preparation of this manuscript, Figure 5C was labeled incorrectly. The correct figure panel is shown at right.

The authors regret the error.



DIRECTOR - DIVISION OF ENDOCRINOLOGY, DIABETES & METABOLISM

The Department of Internal Medicine seeks an experienced Endocrinologist with a record of outstanding clinical and academic success to serve as the Director of the Division of Endocrinology, Diabetes & Metabolism and hold the Albert W. Vontz Chair in Diabetes.

This individual will lead the division through continued growth and development of the highest quality clinical, educational and research programs to cultivate a comprehensive, multi-disciplinary approach for patients with endocrine related disorders. In addition, he/she will be expected to actively recruit faculty who will enhance basic, clinical and translational research in metabolic diseases on campus, including an existing collaboration with Cincinnati Children's Hospital Medical Center (CCHMC) with a goal of growing a world-class Metabolic Disease Institute.

Endocrinology activities of the University of Cincinnati Academic Health Center are organized and generously supported as the UC Metabolic Diseases Institute (UCMDI), a joint program of the University of Cincinnati College of Medicine (COM) and UC Health. The Endocrinology, Diabetes & Metabolism Division is a major component of the UCMDI. Candidates for the Endocrinology, Diabetes & Metabolism Division Director position will assume a leadership position within the UCMDI and work closely with CCHMC. The UC Academic Health Center is comprised of UC Health hospitals and the faculty practice plan of the COM, and is aligned with the Cincinnati Veteran's Affairs Medical Center and CCHMC.

The Division of Endocrinology currently has a faculty of 17 and 4 fellowship positions matching the clinical services of the program. Areas of active research at the bench and in the community currently include lipids, glucose metabolism, inflammation, the molecular biology-metabolomics interface, diabetes and bariatric surgery among others. The hospital-based practice has total divisional revenues of nearly \$10M.

Candidates with strong basic and translational science programs and experience collaborating with clinicians and clinical trial groups will be particularly well-suited for this position. The successful MD or MD/PhD candidate should be at the rank of Associate Professor, Professor or its equivalent in an academic institution. Interested candidates should submit a detailed curriculum vitae along with an application at www.jobsatuc.com (search for position number 214UC0584), or you can forward a letter of interest and CV or nominations to Dr. Gregory Rouan, Director, Department of Internal Medicine, University of Cincinnati, 231 Albert Sabin Way, MLC 0551, Cincinnati, OH 45267-0551.

Review of applications will commence immediately and continue until the position is filled.

The University of Cincinnati is an affirmative action/equal opportunity employer. Women, People of Color, persons with a disability, and veterans are encouraged to apply. We are committed to increasing the diversity of the University community. Candidates who can contribute to that goal are encouraged to apply and to identify their relevant strengths or experiences.

The U.C. Academic Health Center is a smoke-free work environment.